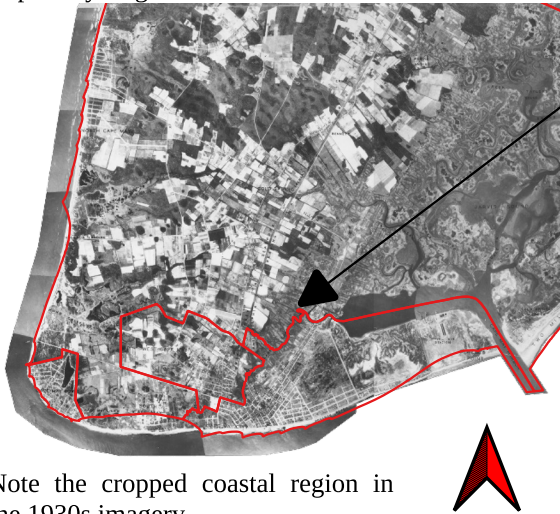


Cape May Canal Through Time

Cape May Region in the 1930s



Note the cropped coastal region in the 1930s imagery.

Before canal was dug



Cape May Region in the 1980s



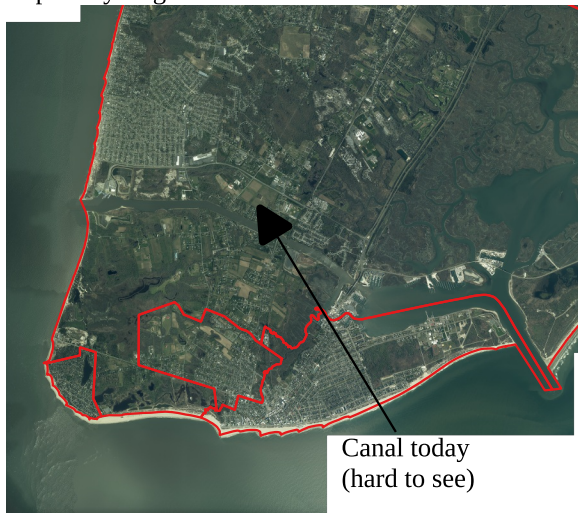
Canal in the 1980s

Using infrared allows water to be clearly distinguished from land.

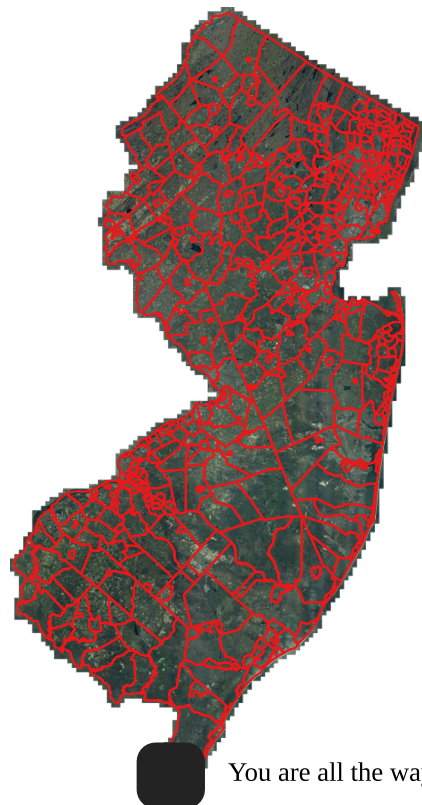
Today, the Cape May Canal is the sole reason why Cape May is an island. It creates an inland waterway from the Cape May Harbor to the Delaware Bay. This waterway allows for boat traffic to avoid going into the Atlantic Ocean.

Source: marinas.com

Cape May Region in 2020



Canal today
(hard to see)



You are all the way down here.

