

# Cape May Canal Through Time

Cape May Region in the 1930s



Note the cropped coastal region in the 1930s imagery.



Before canal was dug



Cape May Canal being used in the modern day.

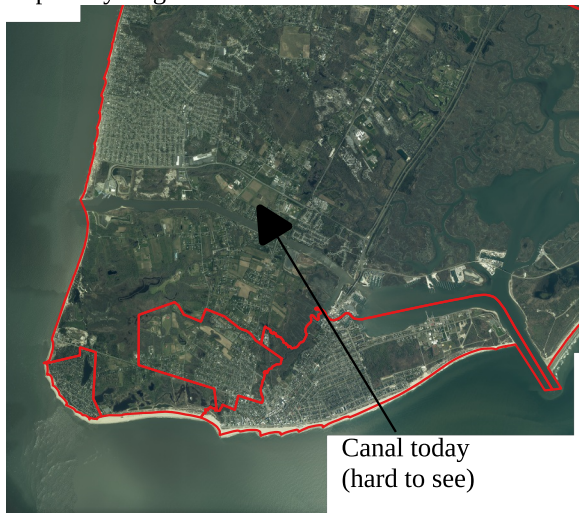
Cape May Region in the 1980s



Canal in the 1980s

Using infrared allows water to be clearly distinguished from land.

Cape May Region in 2020



Canal today  
(hard to see)



You are all the way  
down here.

